

# UNION GLASS SOLUTION LLC

## Engineered Under U.S Standards

At Union Glass Solutions DBA FZ Glass, we specialize in custom-designed shower doors tailored to your space and vision. From unique layouts to premium hardware, we turn your ideas into reality with expert craftsmanship and attention to detail.

We provide:

- Custom shower door design
- High-quality materials and hardware
- Professional installation
- Fast, reliable service
- 3-year warranty on products and installation

Your dream shower door starts with your vision — and we’re here to bring it to life.

### Single Sliding Shower Door



AS-0138

AS-0138D

AS-2960

AS-2960D

AS-2970

### Double Sliding Shower Door



AS-8855

AS-8855D

AS-8860SC

AS-8860DSC

### Framed Shower Door



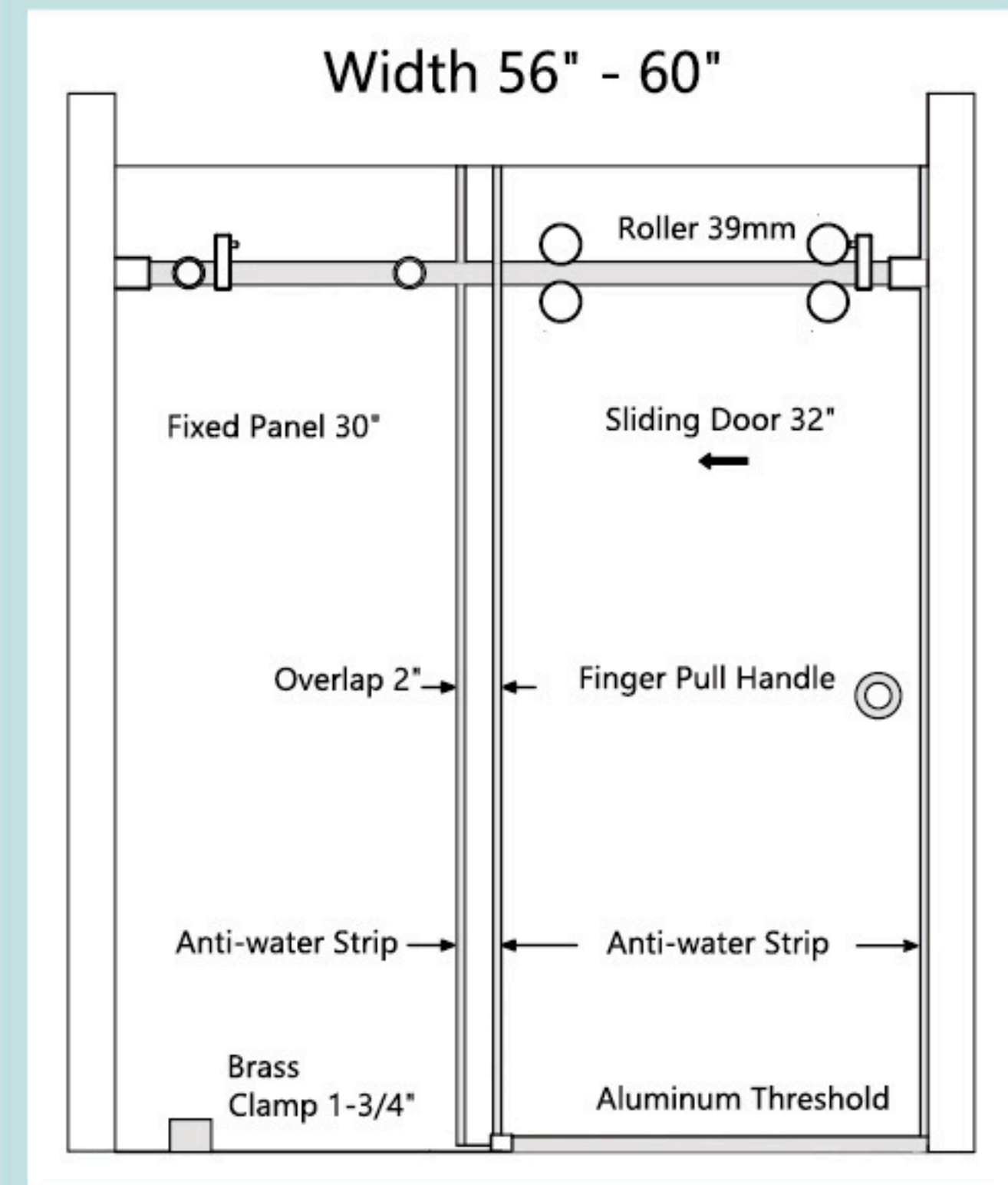
AS-P22

AS-P22A

FR7634

Hinged Door





3/8" ANSI Z97.1 certified tempered glass  
304-series stainless steel hardware



### AS-0138 includes the following:

1 x Fixed 3/8" Tempered Glass Panel  
1 x Sliding 3/8" Tempered Glass Panel  
4 x Roller  $\phi$ 39mm  
2 x Stopper  
1 x Header Support Bar 10 x 30mm  
2 x Wall Mount Fitting  
2 x Track Holder Fitting for Fixed Panel  
2 x Anti-water Strip Between Glass

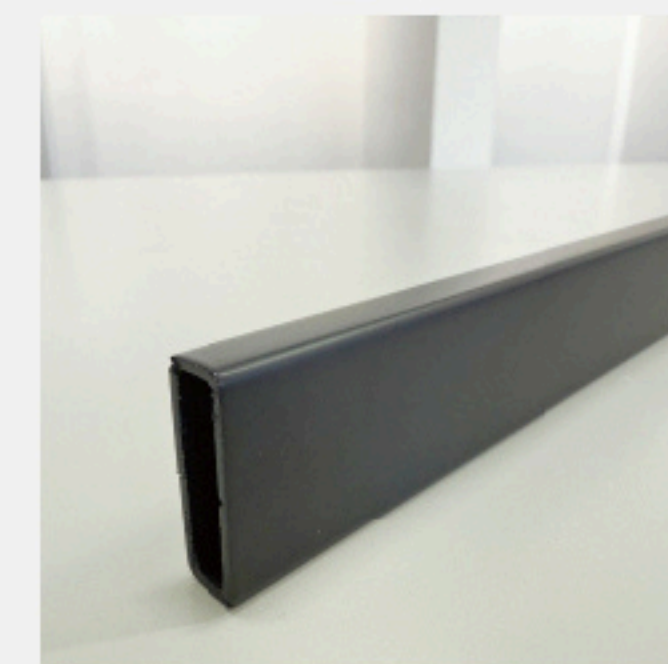
1 x U-shape Strip on Sliding Door to Wall  
1 x Strip on Fix Door to Wall  
1 x Door Guide  
1 x Aluminum Anti-splash Threshold  
1 x 1-3/4" Clamp, or 2 x 3/4" U-channel  
1 x 58mm Hidden Handle, or 8" Square Handle  
A Kit Containing Allen Keys and Screws



4 rollers  $\phi$ 39mm  
3/8" of built-in  
adjustability ensures  
that the door  
remains level.



Turn the hex screw  
to move the support  
bar up and down  
to achieve leveling.



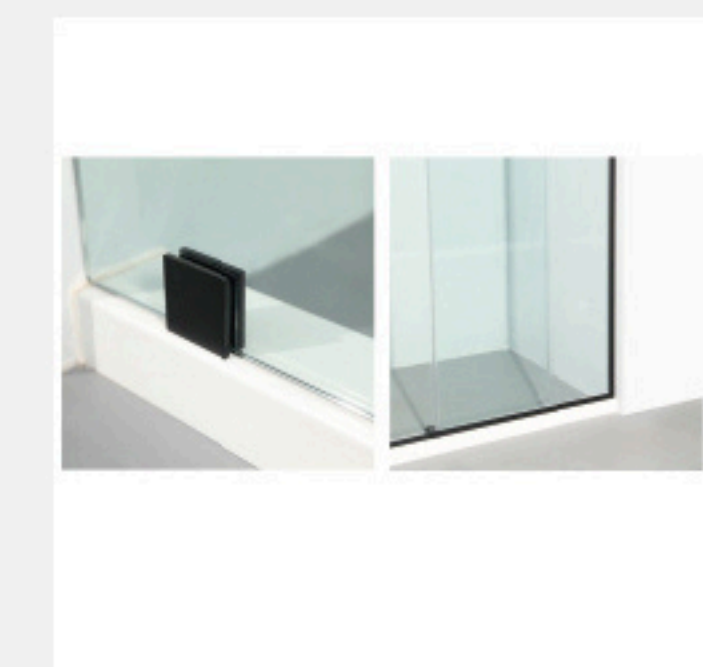
The rail tube is  
10 x 30mm with a  
thickness of 1.5mm,  
ensuring sturdiness.



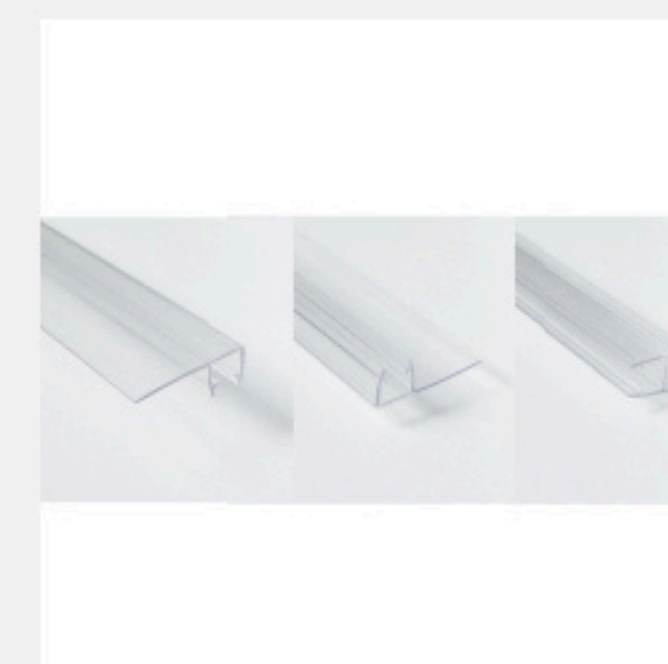
58mm hidden handle  
Optional:  
8" square handle



Door guide 2-3/16"  
is assembled with  
the aluminum  
threshold.



Optional:  
1-3/4" brass clamp  
3/4" U-channel

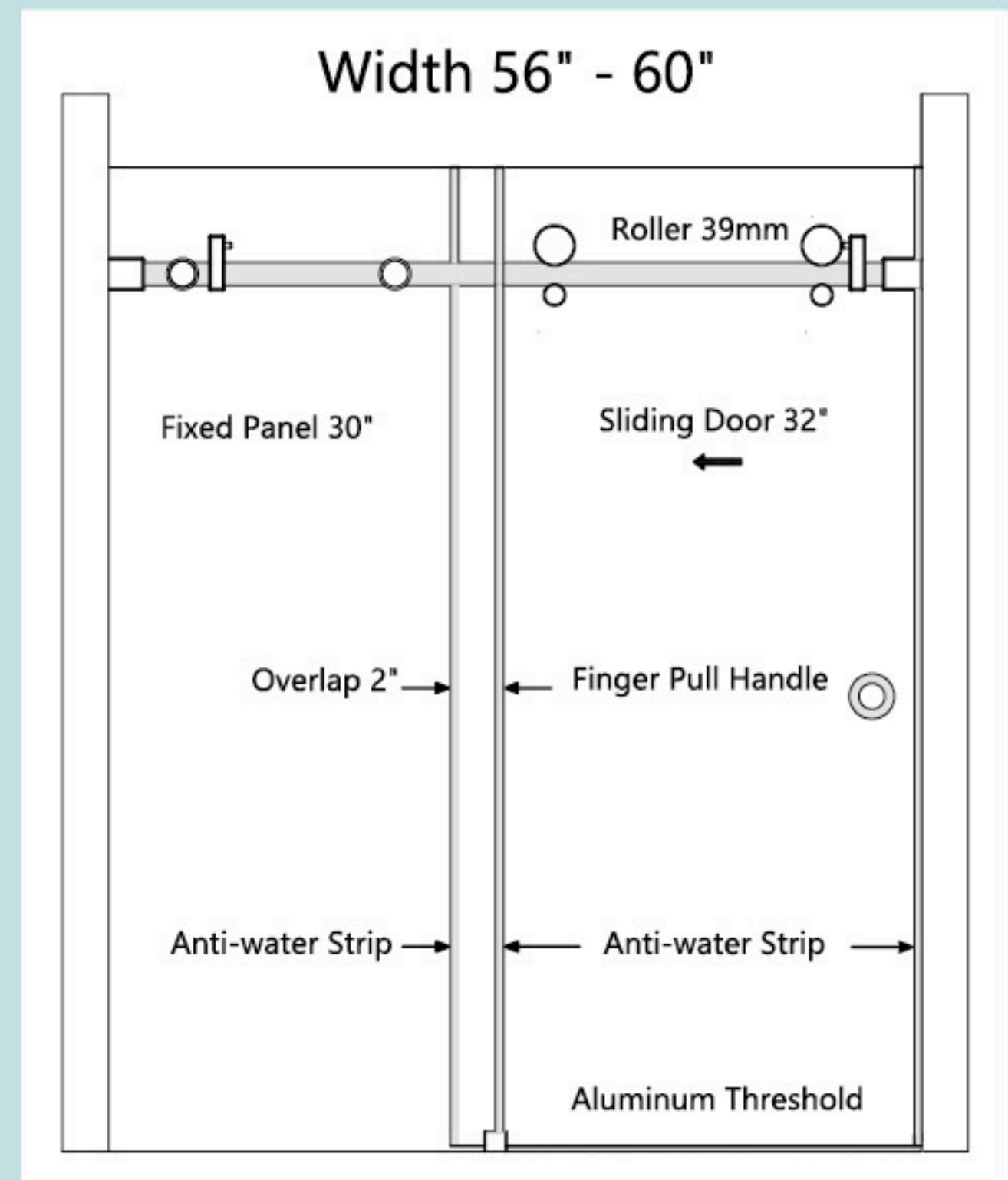


2pcs strips between  
panels  
U-shape strip on  
sliding door to wall

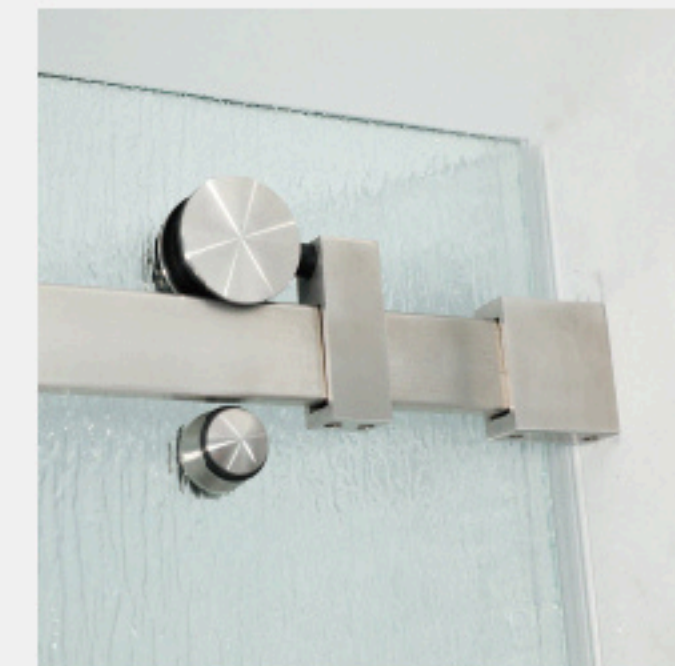


Strip on fix door to  
wall for out-of-plumb  
walls.

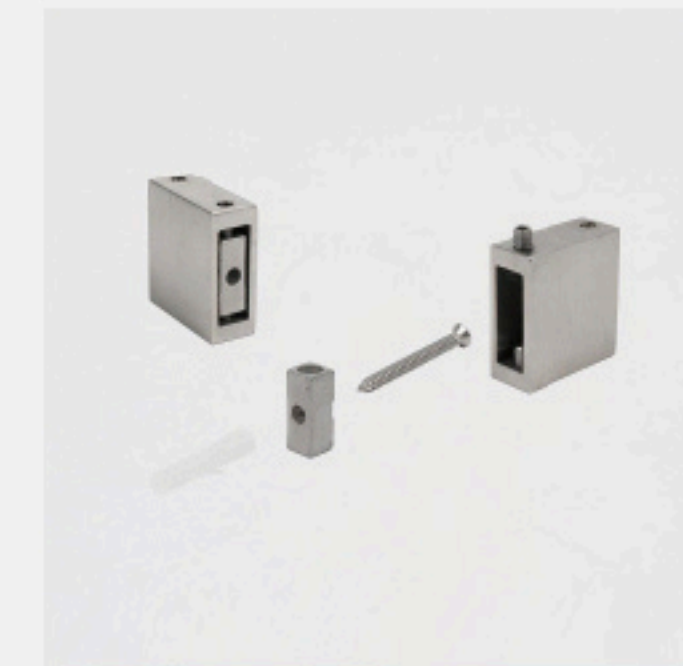




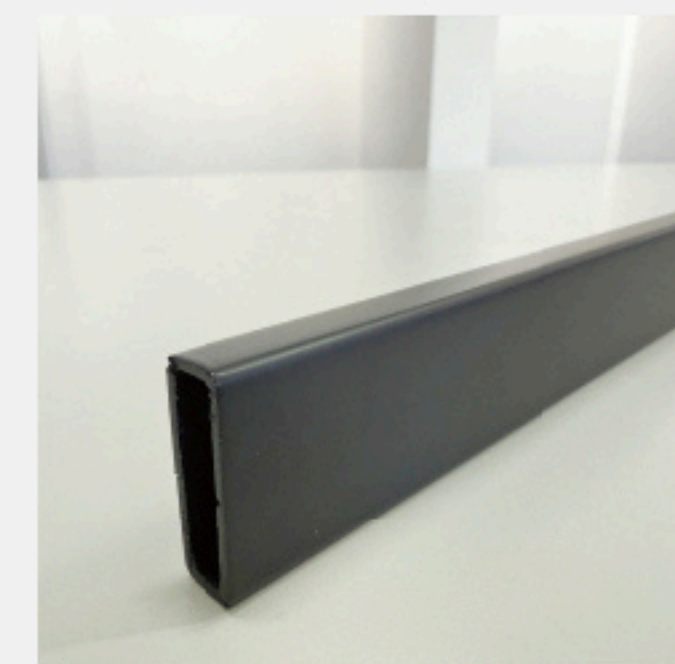
3/8" ANSI Z97.1 certified tempered glass  
304-series stainless steel hardware



2 rollers  $\phi 39\text{mm}$   
3/8" of built-in  
adjustability  
ensures that the  
door remains level.



Turn the hex screw  
to move the support  
bar up and down to  
achieve leveling.



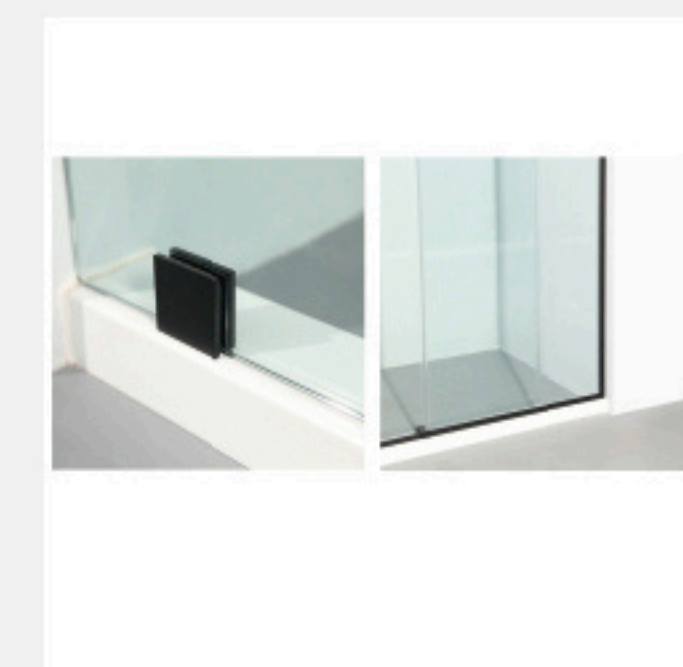
The rail tube is  
10 x 30mm with a  
thickness of 1.5mm,  
ensuring sturdiness.



58mm hidden handle  
Optional:  
8" square handle



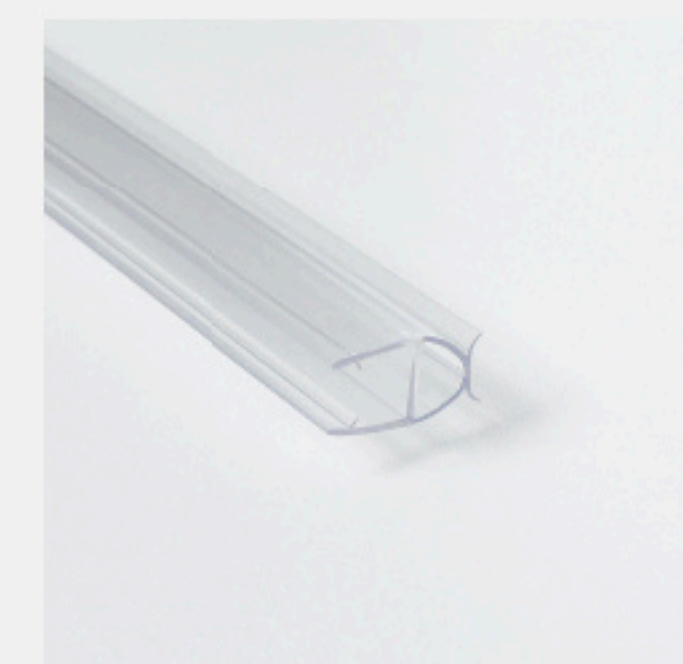
Door guide 2-5/16"  
is connected to the  
aluminum threshold.



Optional:  
1-3/4" brass clamp  
3/4" U-channel



2pcs strips between  
panels  
U-shape strip on  
sliding door to wall



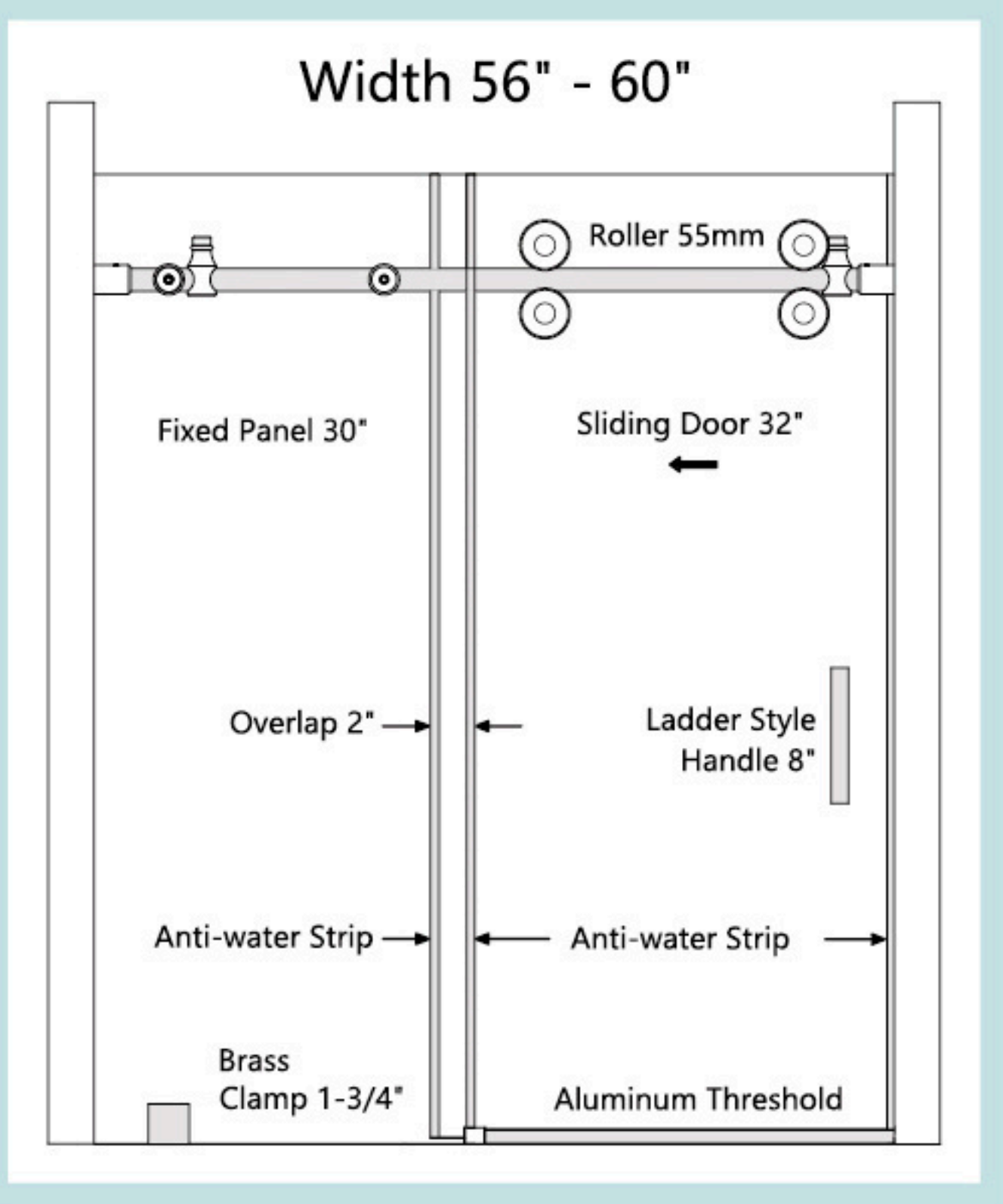
Strip on fix door to  
wall for out-of-plumb  
walls.

## AS-0138D includes the following:

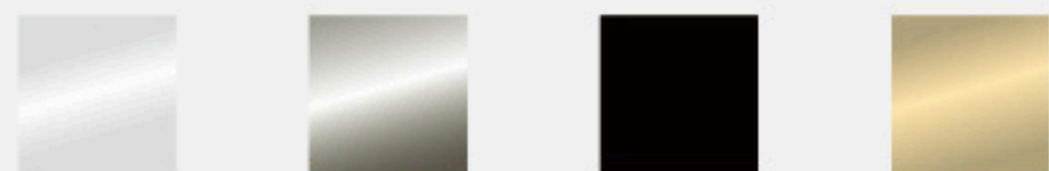
1 x Fixed 3/8" Tempered Glass Panel  
1 x Sliding 3/8" Tempered Glass Panel  
2 x Roller  $\phi 39\text{mm}$   
2 x Anti-jump Nail  
2 x Stopper  
1 x Header Support Bar 10 x 30mm  
2 x Wall Mount Fitting  
2 x Track Holder Fitting for Fixed Panel

2 x Anti-water Strip between Glass  
1 x U-shape Strip on Sliding Door to Wall  
1 x Strip on Fix Door to Wall  
1 x Door Guide  
1 x Aluminum Anti-splash Threshold  
1 x 1-3/4" Clamp, or 2 x 3/4" U-channel  
1 x 58mm Hidden Handle, or 8" Square Handle  
A Kit Containing Allen Keys and Screws





3/8" ANSI Z97.1 certified tempered glass  
304-series stainless steel hardware



### AS-2960 includes the following:

- 1 x Fixed 3/8" Tempered Glass Panel
- 1 x Sliding 3/8" Tempered Glass Panel
- 4 x Roller  $\phi 55\text{mm}$
- 2 x Stopper
- 1 x Header Support Bar  $\phi 25\text{mm}$
- 2 x Wall Mount Fitting
- 2 x Track Holder Fitting for Fixed Panel
- 2 x Anti-water Strip between Glass

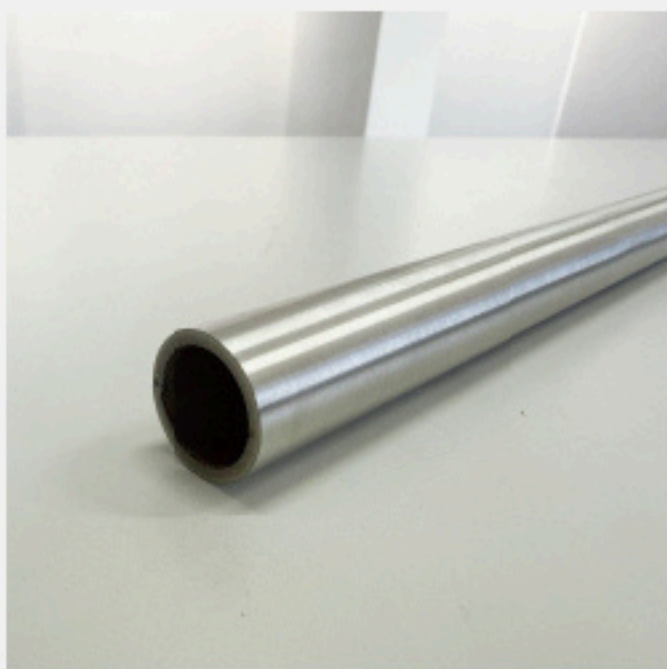
- 1 x U-shape Strip on Sliding Door to Wall
- 1 x Strip on Fix Door to Wall
- 1 x Door Guide
- 1 x Aluminum Anti-splash Threshold
- 1 x 1-3/4" Clamp, or 2 x 3/4" U-channel
- 1 x 8" Ladder Style Handle
- A Kit Containing Allen Keys and Screws



4 rollers  $\phi 55\text{mm}$   
3/8" of built-in  
adjustability  
ensures that the  
door remains level.



The elliptical hole device  
makes leveling effortless.  
The hex screw is locked  
into the wall screw,  
ensuring stability and  
preventing falling.



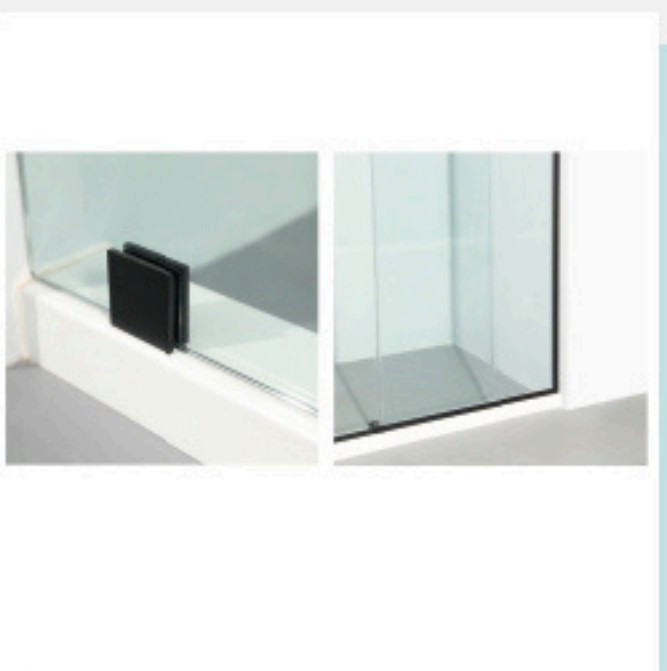
The rail tube has a  
diameter of 25mm  
and a thickness of  
2.5mm, ensuring  
sturdiness.



Ladder style handle 8"  
The tube thickness 1.2mm  
Solid brass axle makes  
the handle stable.



Door guide 2-7/8" is  
assembled with the  
aluminum threshold.



Brass clamp 1-3/4"  
Optional: U-Channel 3/4"

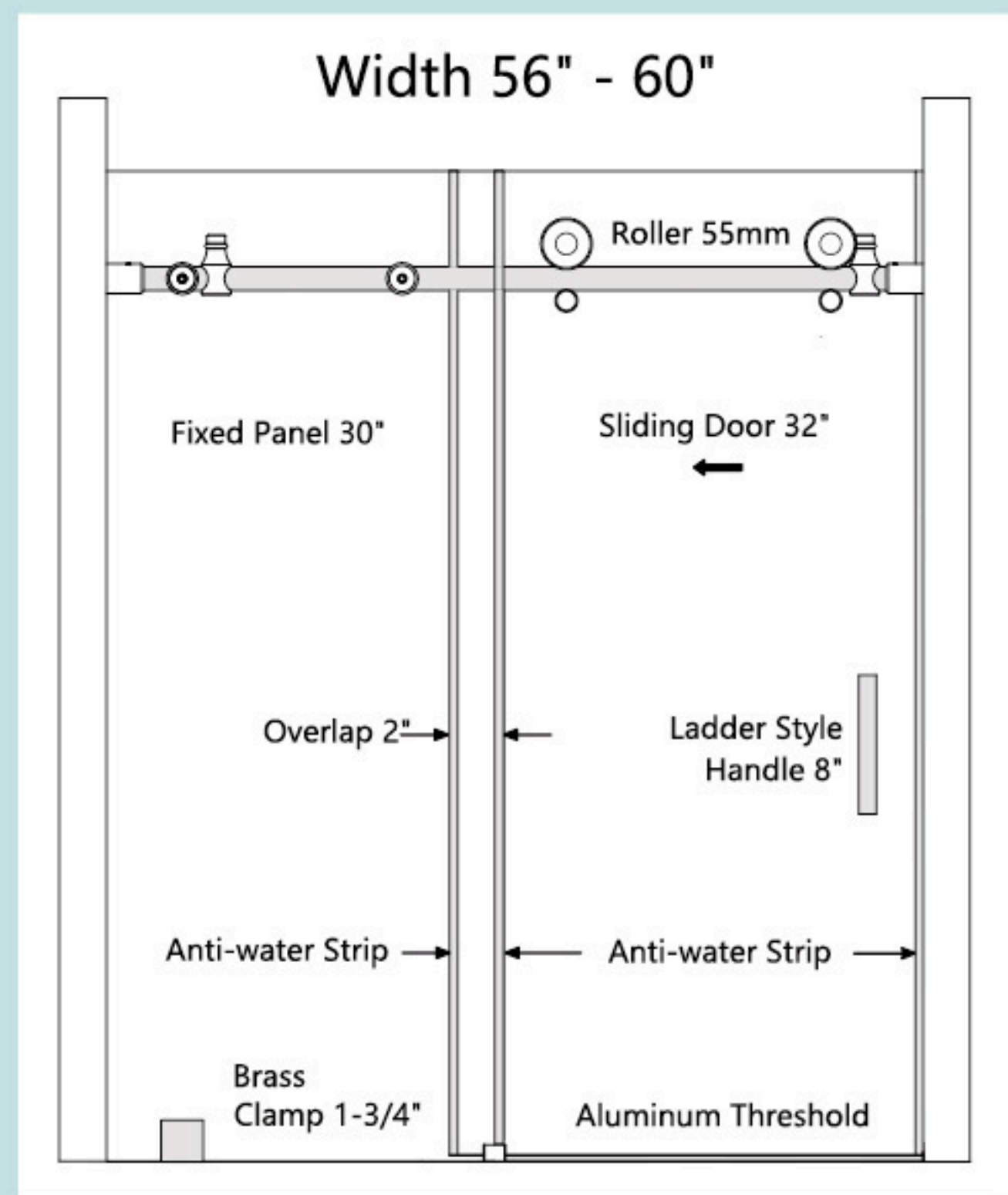


2pcs strips between  
panels  
U-shape strip on  
sliding door to wall

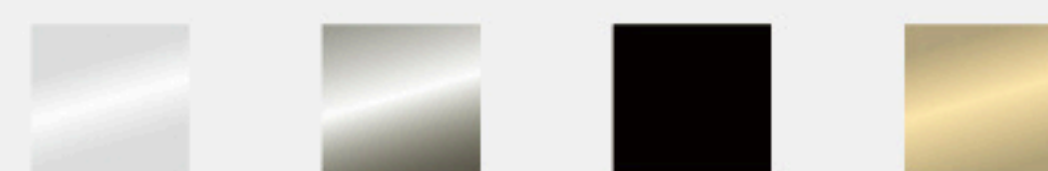


Strip on fix door to  
wall for out-of-plumb  
walls.





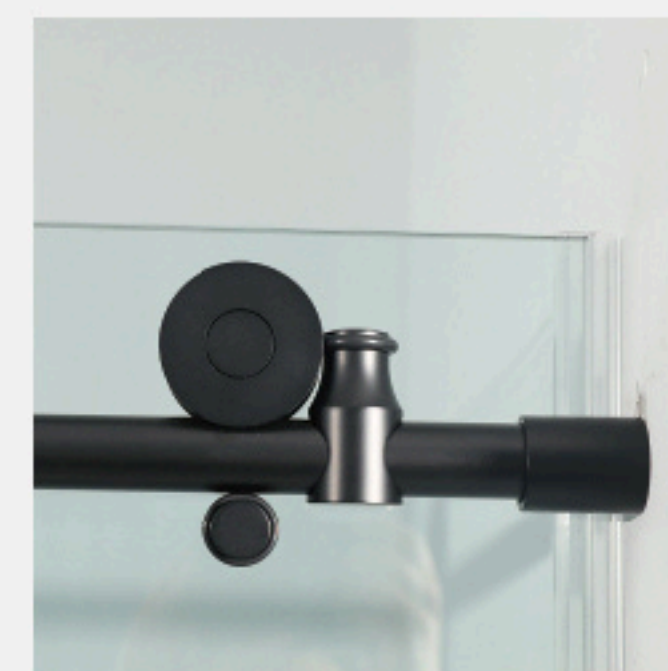
3/8" ANSI Z97.1 certified tempered glass  
304-series stainless steel hardware



## AS-2960D includes the following:

- 1 x Fixed 3/8" Tempered Glass Panel
- 1 x Sliding 3/8" Tempered Glass Panel
- 2 x Roller  $\phi 55\text{mm}$
- 2 x Anti-jump Nail
- 2 x Stopper
- 1 x Header Support Bar  $\phi 25\text{mm}$
- 2 x Wall Mount Fitting
- 2 x Track Holder Fitting for Fixed Panel

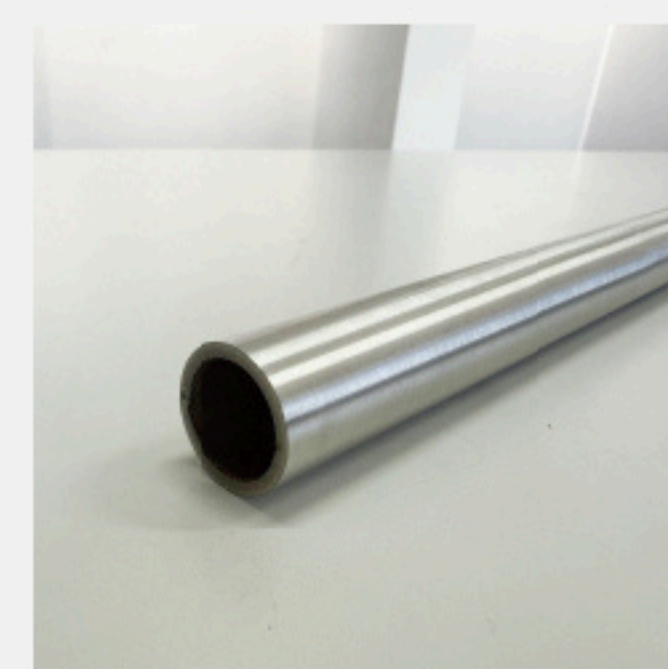
- 2 x Anti-water Strip between Glass
- 1 x U-shape Strip on Sliding Door to Wall
- 1 x Strip on Fix Door to Wall
- 1 x Door Guide
- 1 x Aluminum Anti-splash Threshold
- 1 x 1-3/4" Clamp, or 2 x 3/4" U-channel
- 1 x 8" Ladder Style Handle
- A Kit Containing Allen Keys and Screws



2 rollers  $\phi 55\text{mm}$   
3/8" of built-in adjustability ensures that the door remains level.



The elliptical hole device makes leveling effortless. The hex screw is locked into the wall screw, ensuring stability and preventing falling.



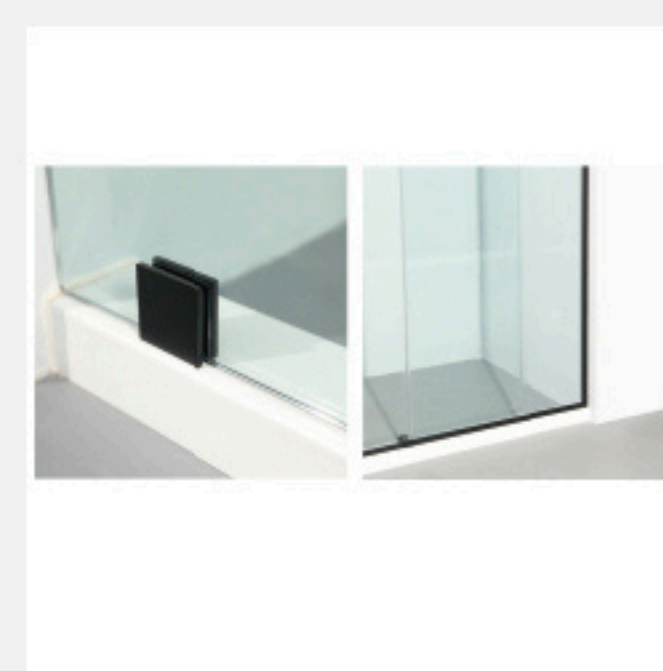
The rail tube has a diameter of 25mm and a thickness of 2.5mm, ensuring sturdiness.



Ladder style handle 8"  
The tube thickness 1.2mm  
Solid brass axle makes the handle stable.



Door guide 2-7/8" is connected to the aluminum threshold.



Brass clamp 1-3/4"  
Optional: U-channel 3/4"

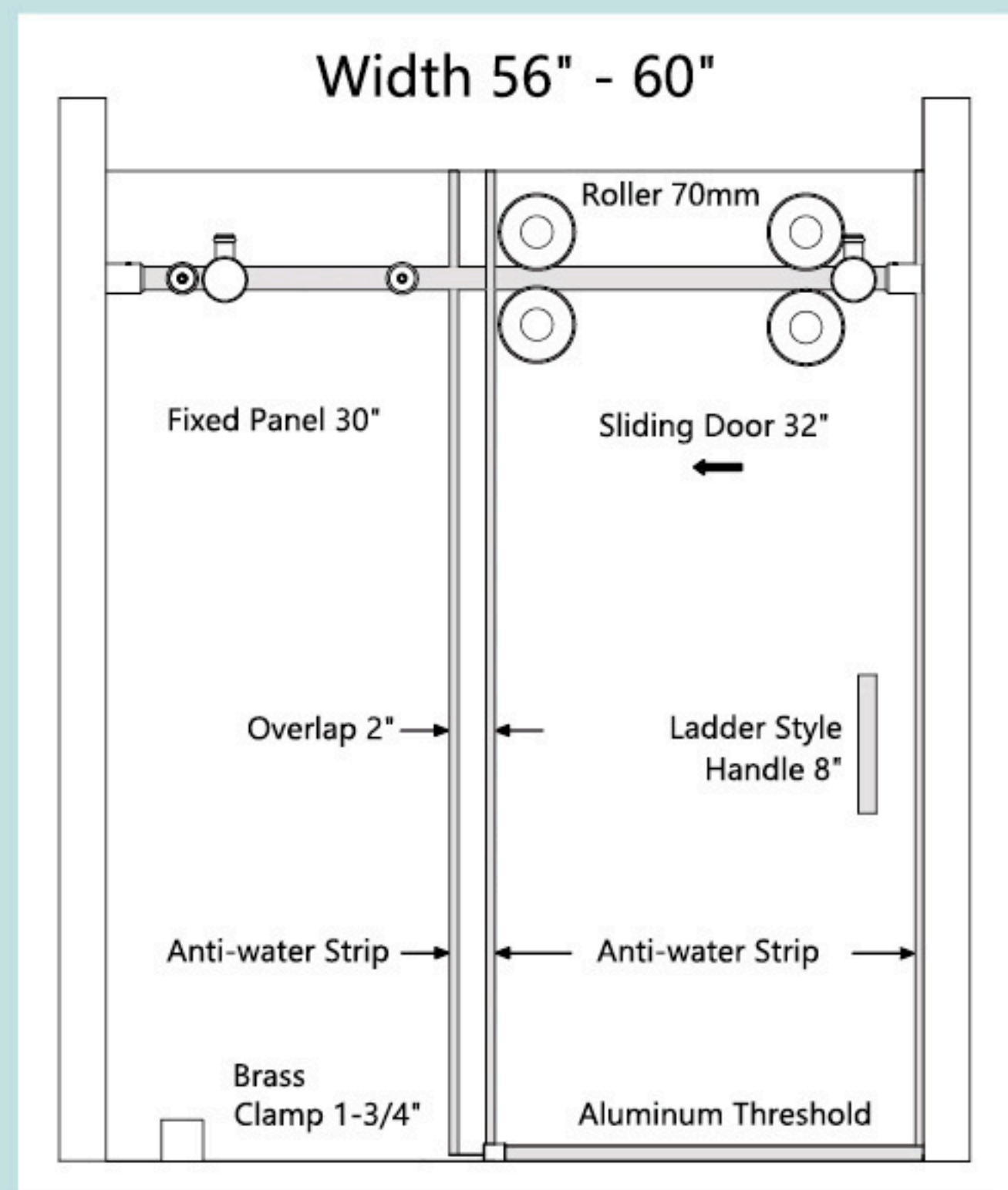


2pcs strips between panels  
U-shape strip on sliding door to wall

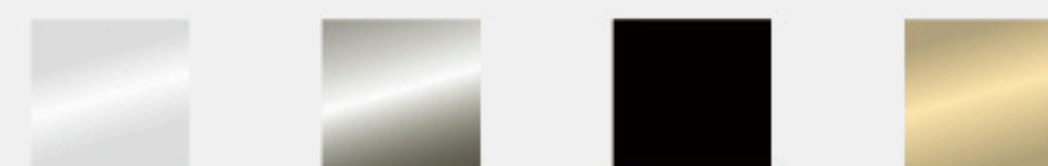


Strip on fix door to wall for out-of-plumb walls.





3/8" ANSI Z97.1 certified tempered glass  
304-series stainless steel hardware



## AS-2970 includes the following:

- 1 x Fixed 3/8" Tempered Glass Panel
- 1 x Sliding 3/8" Tempered Glass Panel
- 4 x Roller  $\phi 70\text{mm}$
- 2 x Stopper
- 1 x Header Support Bar  $\phi 25\text{mm}$
- 2 x Wall Mount Fitting
- 2 x Track Holder Fitting for Fixed Panel
- 2 x Anti-water Strip between Glass

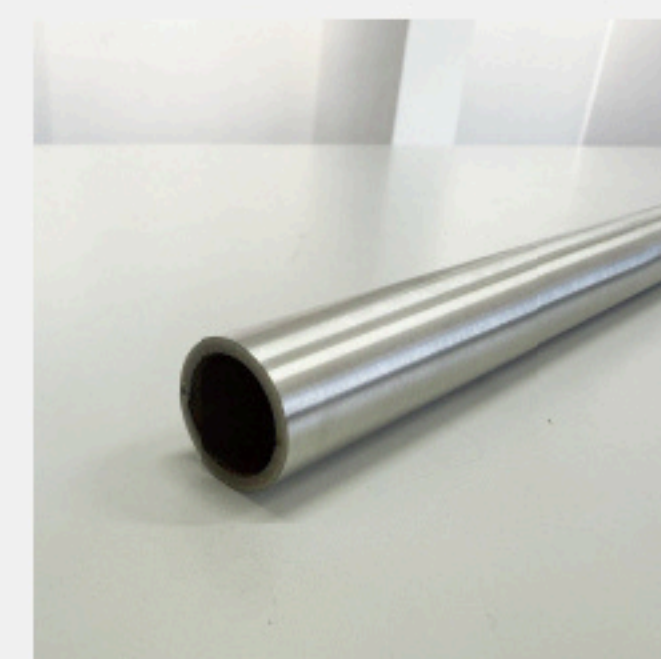
- 1 x U-shape Strip on Sliding Door to Wall
- 1 x Strip on Fix Door to Wall
- 1 x Door Guide
- 1 x Aluminum Anti-splash Threshold
- 1 x 1-3/4" Clamp, or 2 x 3/4" U-channel
- 1 x 8" Ladder Style Handle
- A Kit Containing Allen Keys and Screws



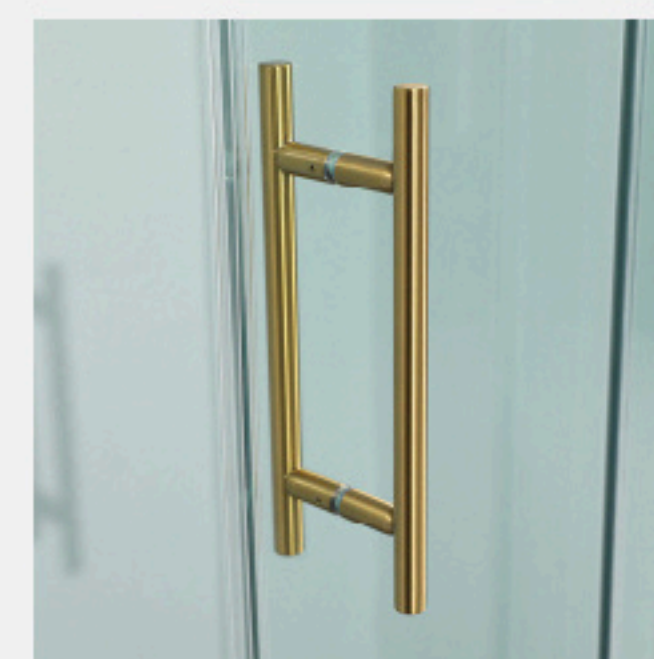
4 rollers  $\phi 70\text{mm}$   
3/8" of built-in adjustability ensures that the door remains level.



The elliptical hole device makes leveling effortless. The hex screw is locked into the wall screw, ensuring stability and preventing falling.



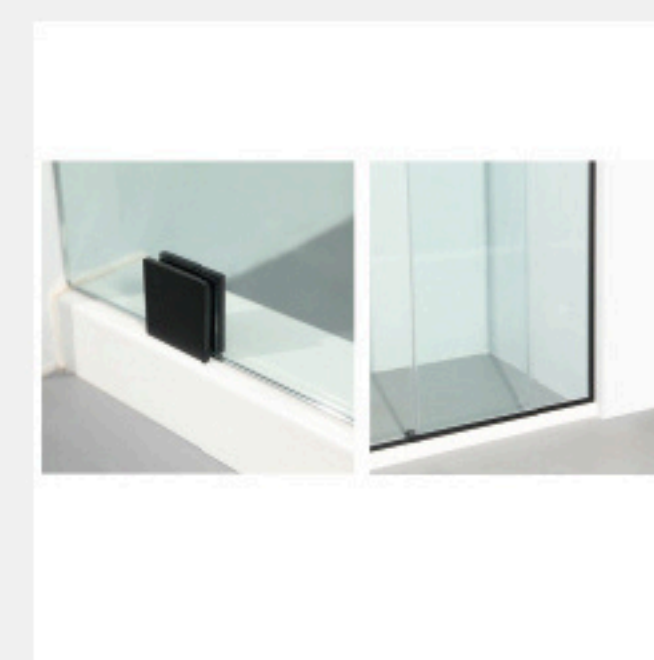
The rail tube has a diameter of 25mm and a thickness of 2.5mm, ensuring sturdiness.



Ladder style handle 8"  
The tube thickness 1.2mm  
Solid brass axle makes the handle stable.



Door guide 2-7/8" is assembled with the aluminum threshold.



Brass clamp 1-3/4"  
Optional: U-channel 3/4"

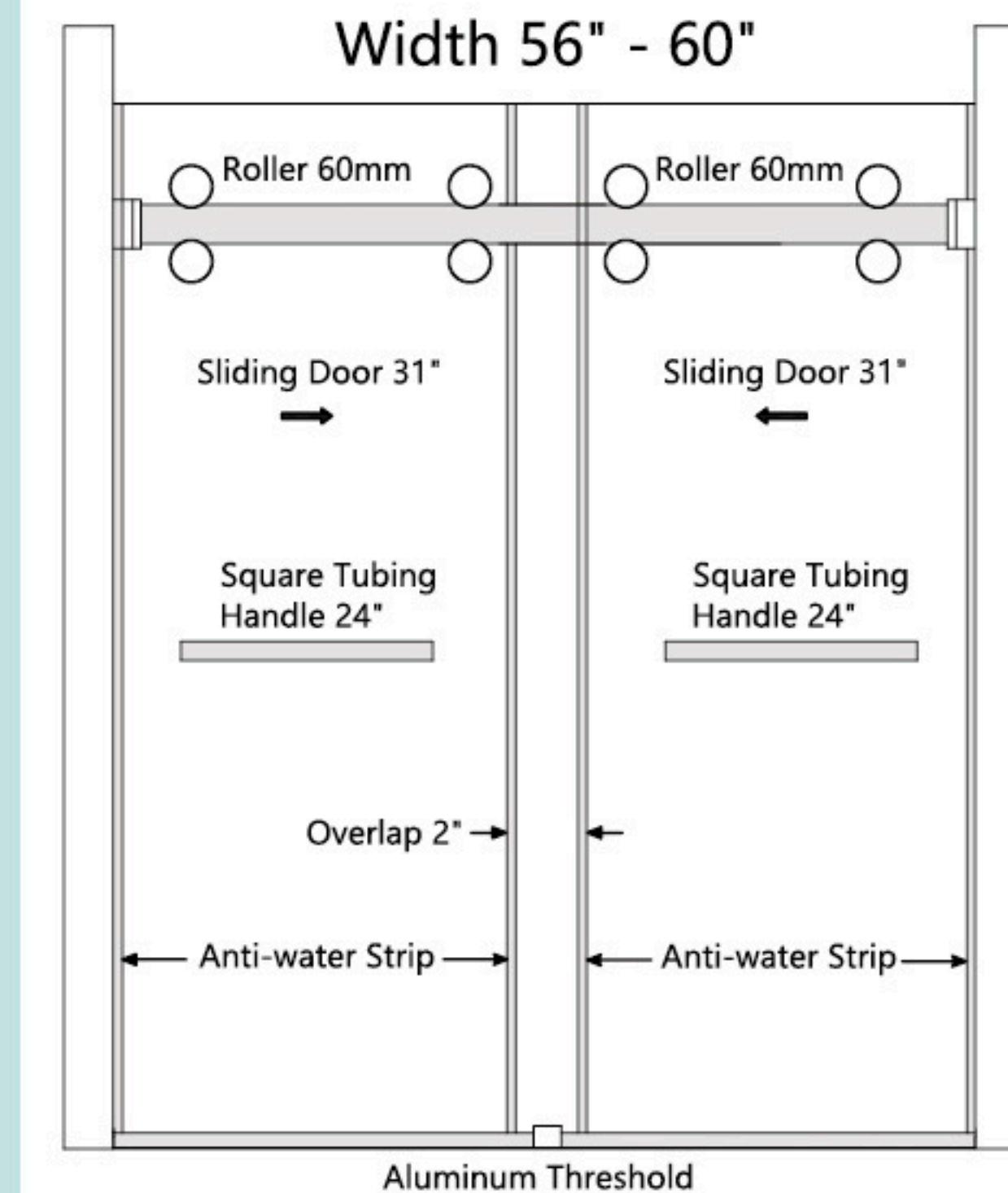


2pcs strips between panels  
U-shape strip on sliding door to wall

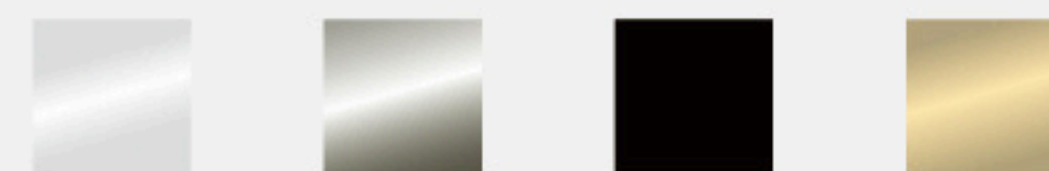


Strip on fix door to wall for out-of-plumb walls.





3/8" ANSI Z97.1 certified tempered glass  
304-series stainless steel hardware



8 rollers φ60mm  
3/8" of built-in  
adjustability ensures  
that the door  
remains level.



The elliptical hole device  
makes leveling effortless.  
The hex screw is locked  
into the wall screw,  
ensuring stability and  
preventing falling.



Top rail height 60mm  
Stainless steel thickness  
1.0mm  
Anodizing aluminum  
inside



2 pcs square tubing  
handle 24"  
Tube thickness 1.2mm



Door guide 3" is  
assembled with the  
aluminum threshold.



Solid aluminium  
threshold



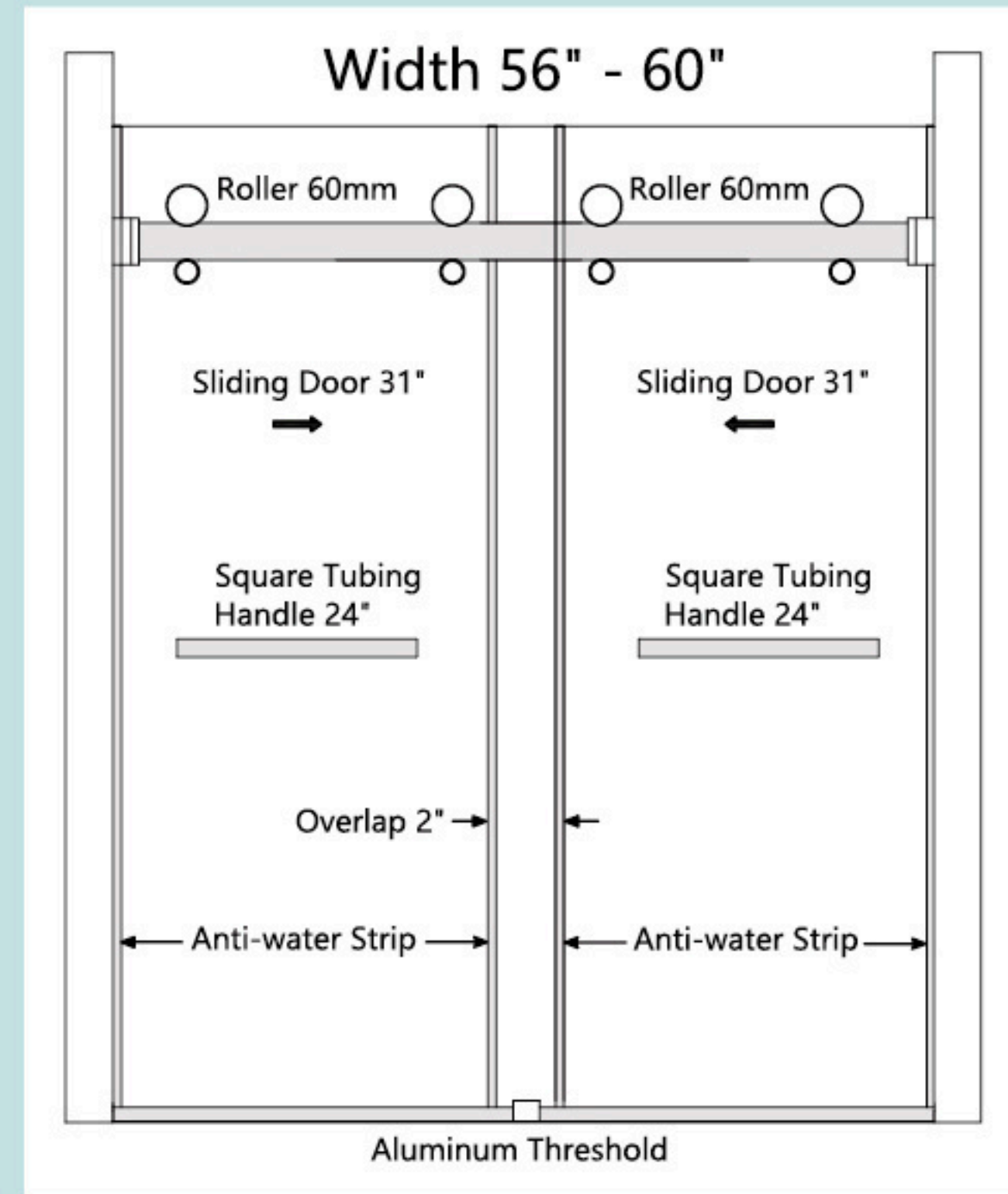
4 pcs clear U-shape strips

## AS-8855 includes the following:

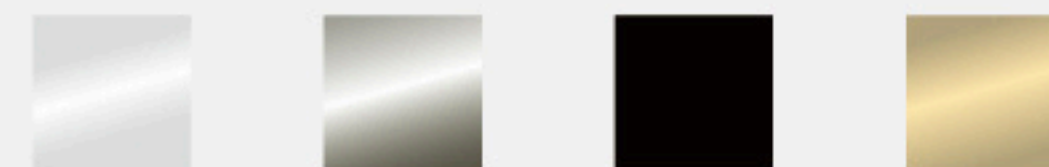
2 x Sliding 3/8" Tempered Glass Panel  
8 x Roller φ60mm  
1 x Header Support Bar  
2 x Wall Mount Fitting  
1 x Door Guide

1 x Solid Aluminum Anti-splash Threshold  
4 x Clear U-shape Strip  
2 x 24" Square Tubing Handle  
A Kit Containing Allen Keys and Screws





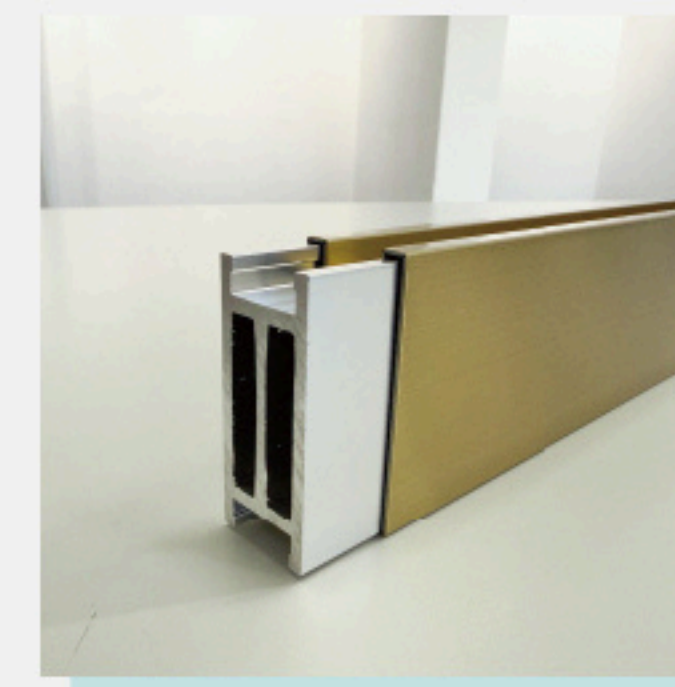
3/8" ANSI Z97.1 certified tempered glass  
304-series stainless steel hardware



4 rollers  $\phi 60\text{mm}$   
3/8" of built-in  
adjustability  
ensures that the  
door remains level.



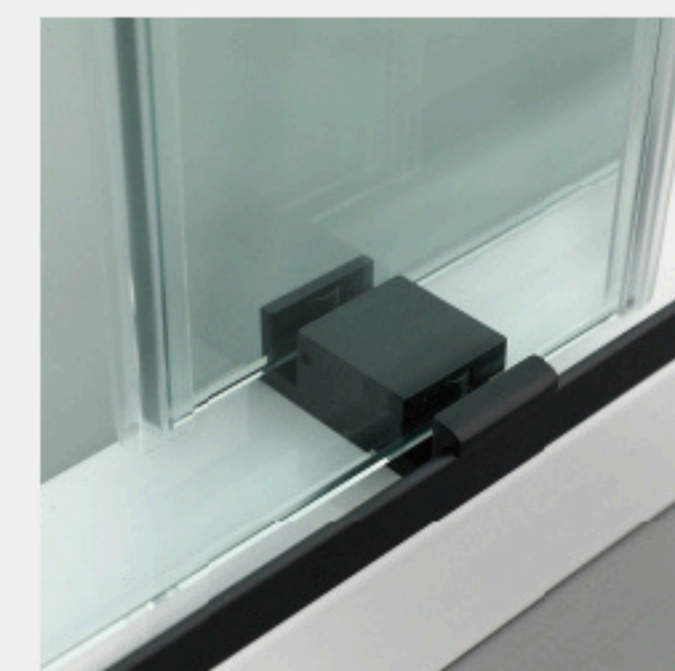
The elliptical hole device  
makes leveling effortless.  
The hex screw is locked  
into the wall screw,  
ensuring stability and  
preventing falling.



Top rail height 60mm  
Stainless steel thickness  
1.0mm  
Anodizing aluminum  
inside



2 pcs square tubing  
handle 24"  
Tube thickness 1.2mm



Door guide 3" is  
assembled with the  
aluminum threshold.



Solid aluminium  
threshold



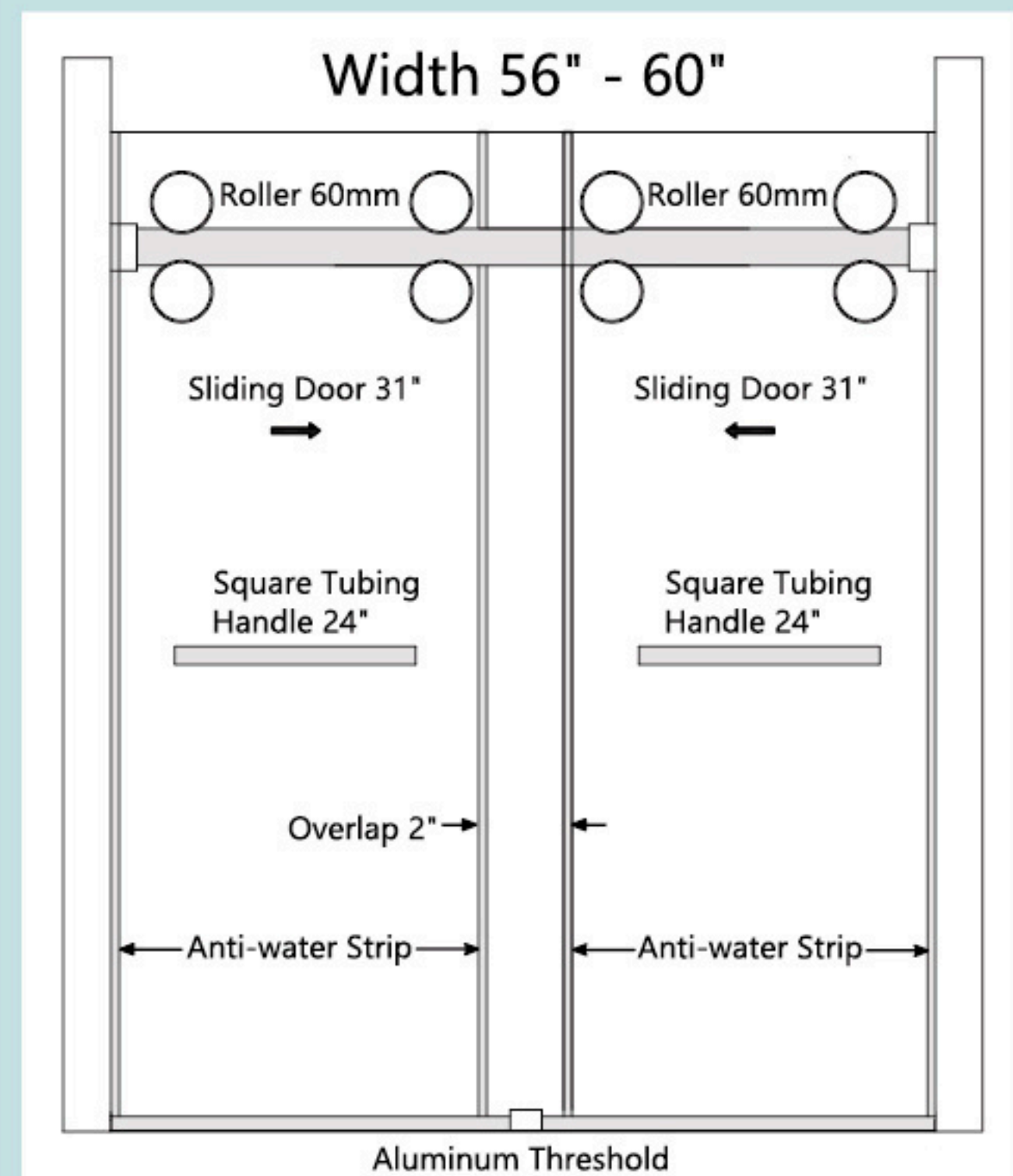
4 pcs clear U-shape strips

## AS-8855D includes the following:

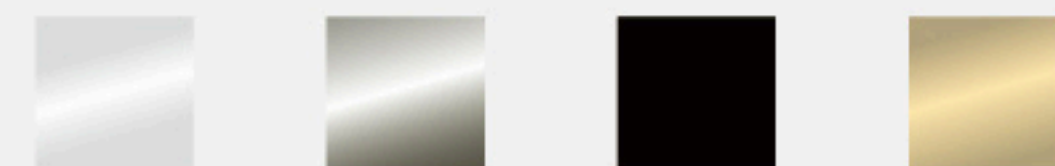
2 x Sliding 3/8" Tempered Glass Panel  
4 x Roller  $\phi 60\text{mm}$   
4 x Anti-jump Nail  
1 x Header Support Bar  
2 x Wall Mount Fitting

1 x Door Guide  
1 x Solid Aluminum Anti-splash Threshold  
4 x Clear U-shape Strip  
2 x 24" Square Tubing Handle  
A Kit Containing Allen Keys and Screws





3/8" ANSI Z97.1 certified tempered glass  
304-series stainless steel hardware



8 rollers φ60mm  
3/8" of built-in  
adjustability ensures  
that the door  
remains level.



The elliptical hole device  
makes leveling effortless.  
The hex screw is locked  
into the wall screw,  
ensuring stability and  
preventing falling.



Top rail height 60mm  
Stainless steel  
thickness 1.0mm  
Anodizing  
aluminum inside



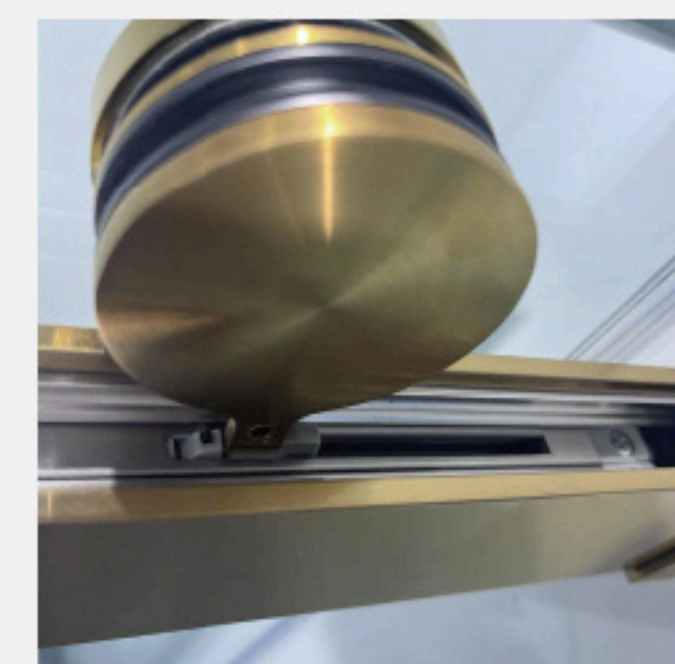
2 pcs square tubing  
handle 24"  
Tube thickness 1.2mm



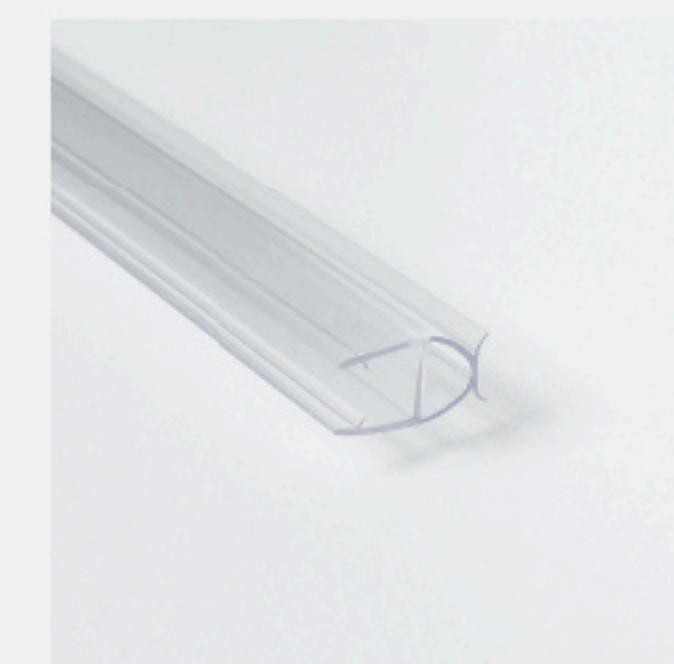
Door guide 3-3/16" is  
assembled with the  
aluminum threshold.



Solid aluminum threshold



Hidden soft close design



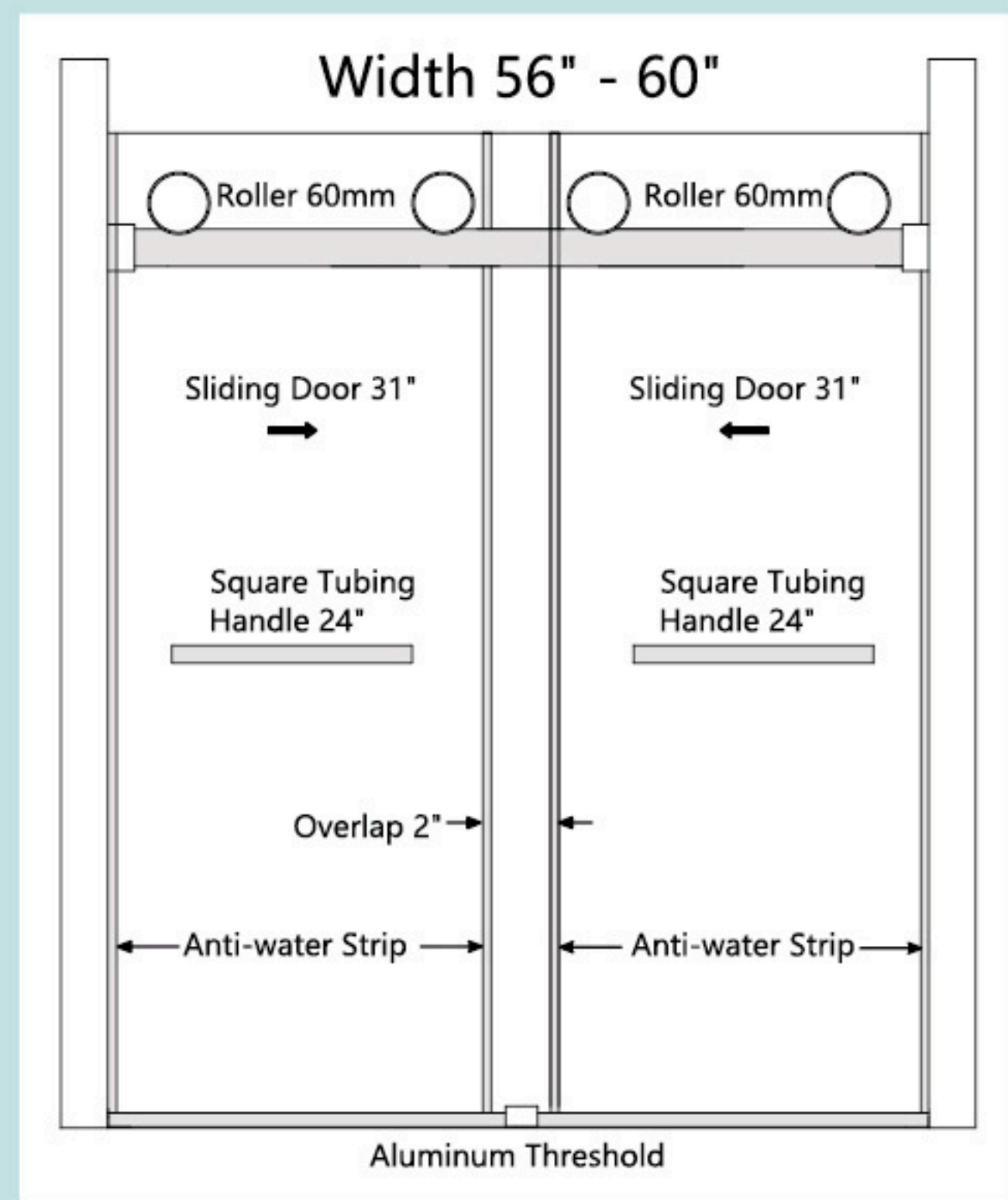
4 pcs clear U-shape strips

## AS-8860SC includes the following:

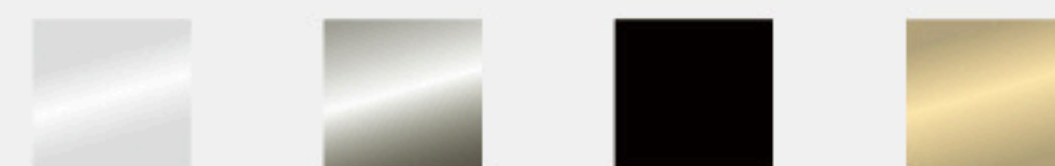
2 x Sliding 3/8" Tempered Glass Panel  
8 x Roller φ60mm  
2 x Soft Close Part  
1 x Header Support Bar  
2 x Wall Mount Fitting

1 x Door Guide  
1 x Solid Aluminum Anti-splash Threshold  
4 x Clear U-shape Strip  
2 x 24" Square Tubing Handle  
A Kit Containing Allen Keys and Screws





3/8" ANSI Z97.1 certified tempered glass  
304-series stainless steel hardware



4 rollers  $\phi 60\text{mm}$   
3/8" of built-in adjustability ensures that the door remains level.



The elliptical hole device makes leveling effortless. The hex screw is locked into the wall screw, ensuring stability and preventing falling.



Top rail height 60mm  
Stainless steel thickness 1.0mm  
Anodizing aluminum inside



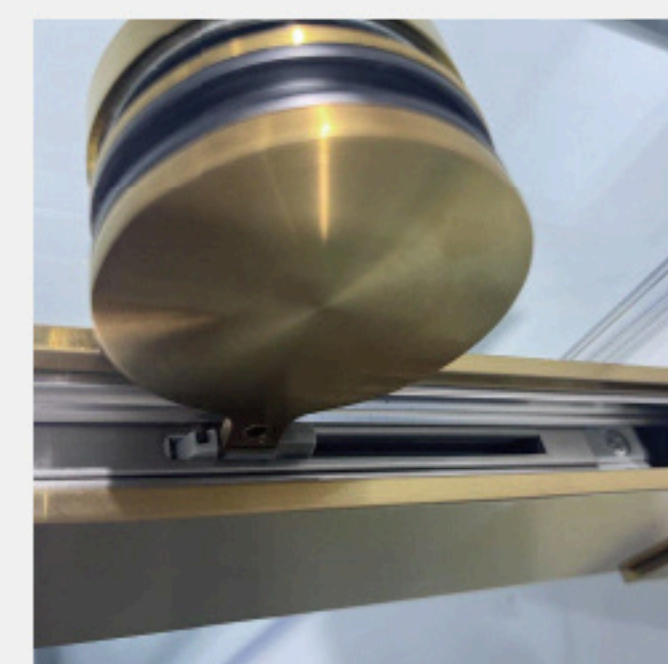
2 pcs square tubing handle 24"  
Tube thickness 1.2mm



Door guide 3-3/16" is assembled with the aluminum threshold.



Solid aluminum threshold



Hidden soft close design



4 pcs clear U-shape strips

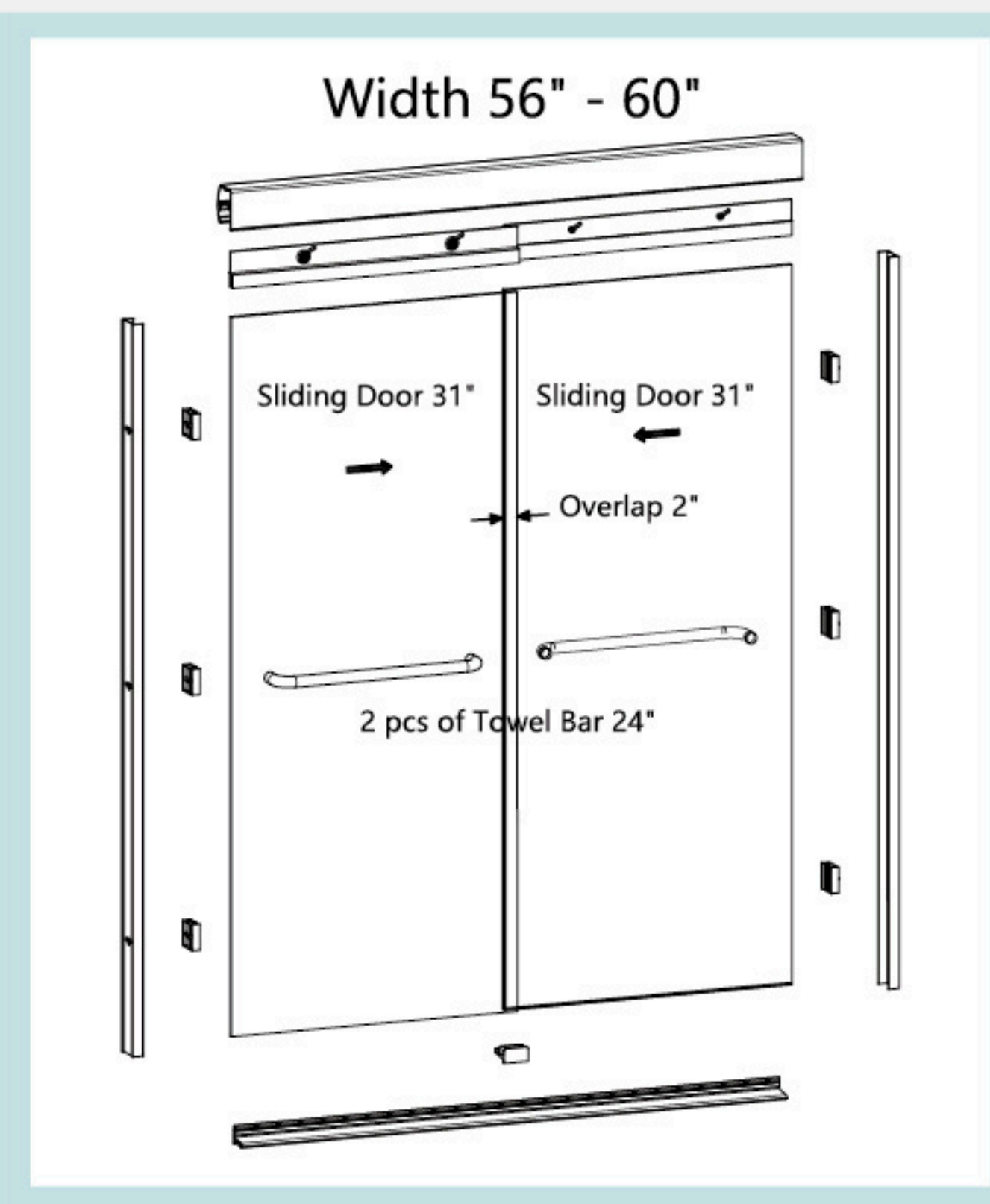
## AS-8860DSC includes the following:

2 x Sliding 3/8" Tempered Glass Panel  
4 x Roller  $\phi 60\text{mm}$   
2 x Soft Close Part  
1 x Header Support Bar  
2 x Wall Mount Fitting

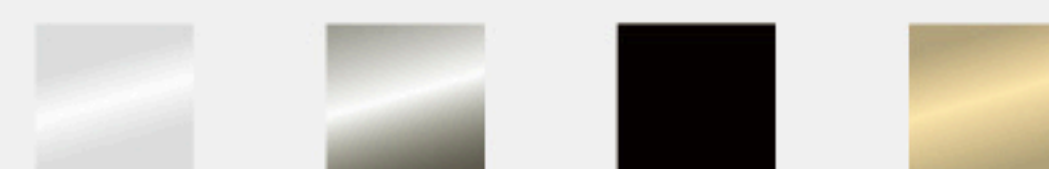
1 x Door Guide  
1 x Solid Aluminum Anti-splash Threshold  
4 x Clear U-shape Strip  
2 x 24" Square Tubing Towel Handle  
A Kit Containing Allen Keys and Screws



## AS-P22 Semi-Frameless Sliding Shower Door



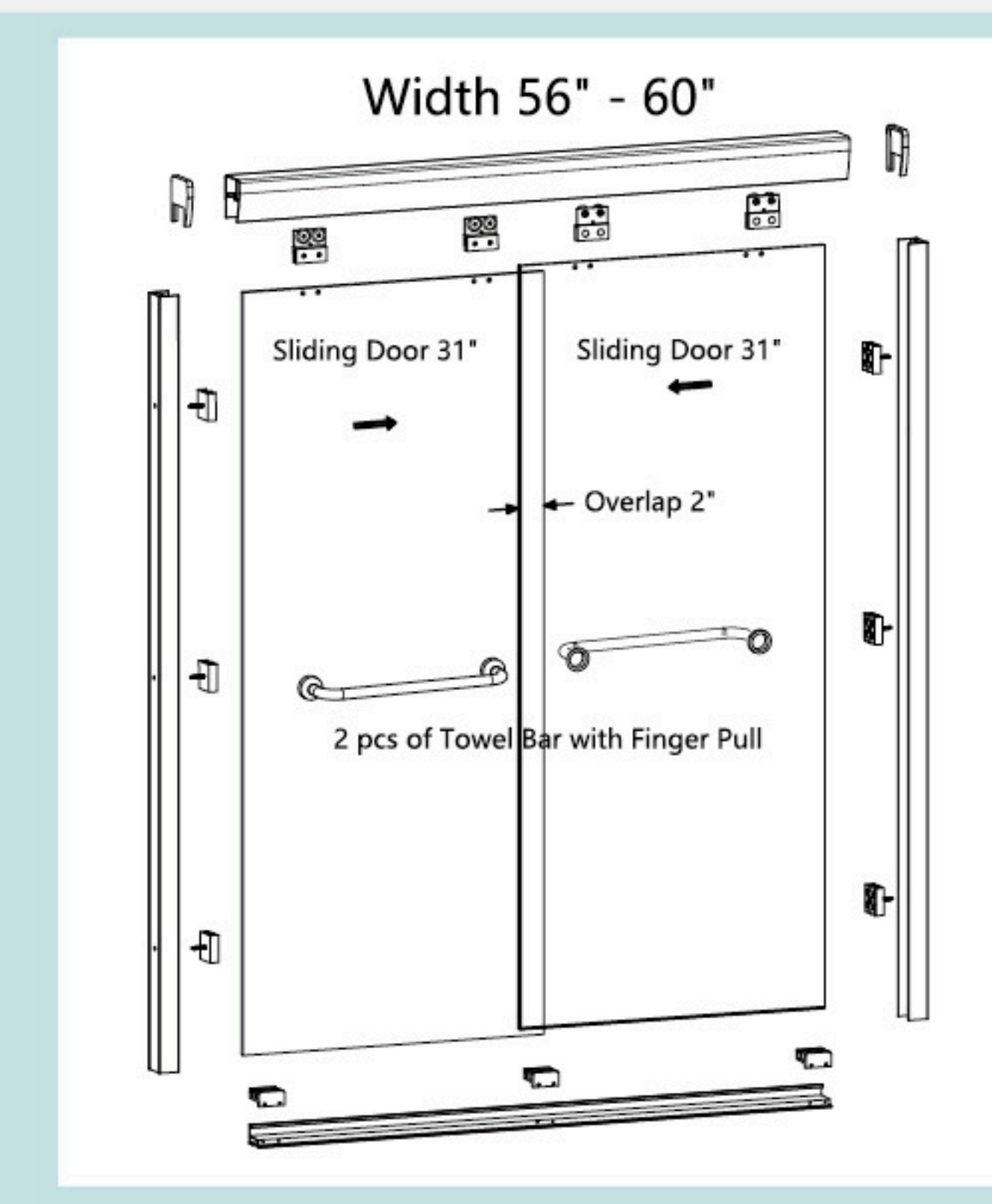
1/4" ANSI Z97.1 certified tempered glass  
Aluminum profile hardware



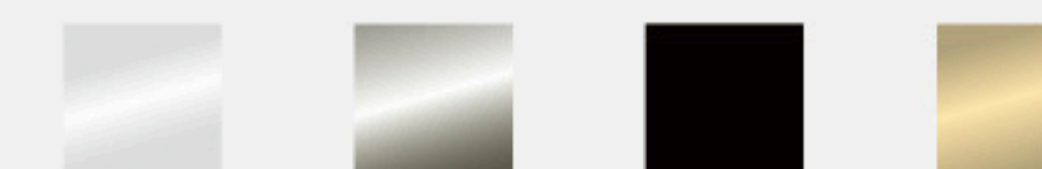
AS-P22 includes the following:  
2 x Sliding 1/4" Tempered Glass  
2 x Pre-glued Aluminium Profile on Glass  
1 x Header Support Bar  
2 x Side Support Bar  
6 x Side Door Guide  
1 x Bottom Support Bar  
1 x Bottom Door Guide  
2 x 24" Round Tube Towel Bar, or 2" Pull Handle  
A Kit Containing Allen Keys and Screws

Handle options: 24" towel bar or hidden pull handle

## AS-P22A Semi-Frameless Sliding Shower Door



3/8" ANSI Z97.1 certified tempered glass  
Aluminum profile hardware



AS-P22A includes the following:  
2 x Sliding 3/8" Tempered Glass  
4 x Roller with Clamp  
1 x Header Support Bar  
2 x Header Support Bar Cover  
2 x Side Support Bar  
6 x Side Door Guide  
1 x Bottom Support Bar  
3 x Bottom Door Guide  
2 x 24" Towel Bar with Finger Pull, or Hidden Handle  
A Kit Containing Allen Keys and Screws

Innovative handle that opens from both sides; it can be used as a towel bar and finger pull.

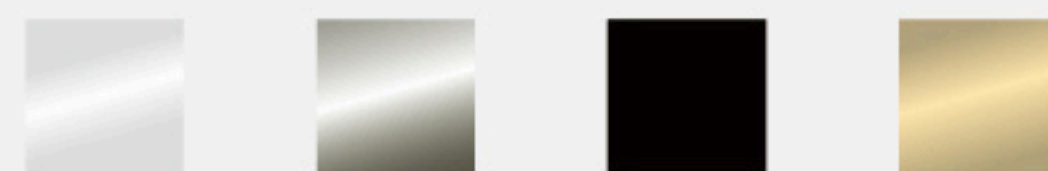


## French Shower Door

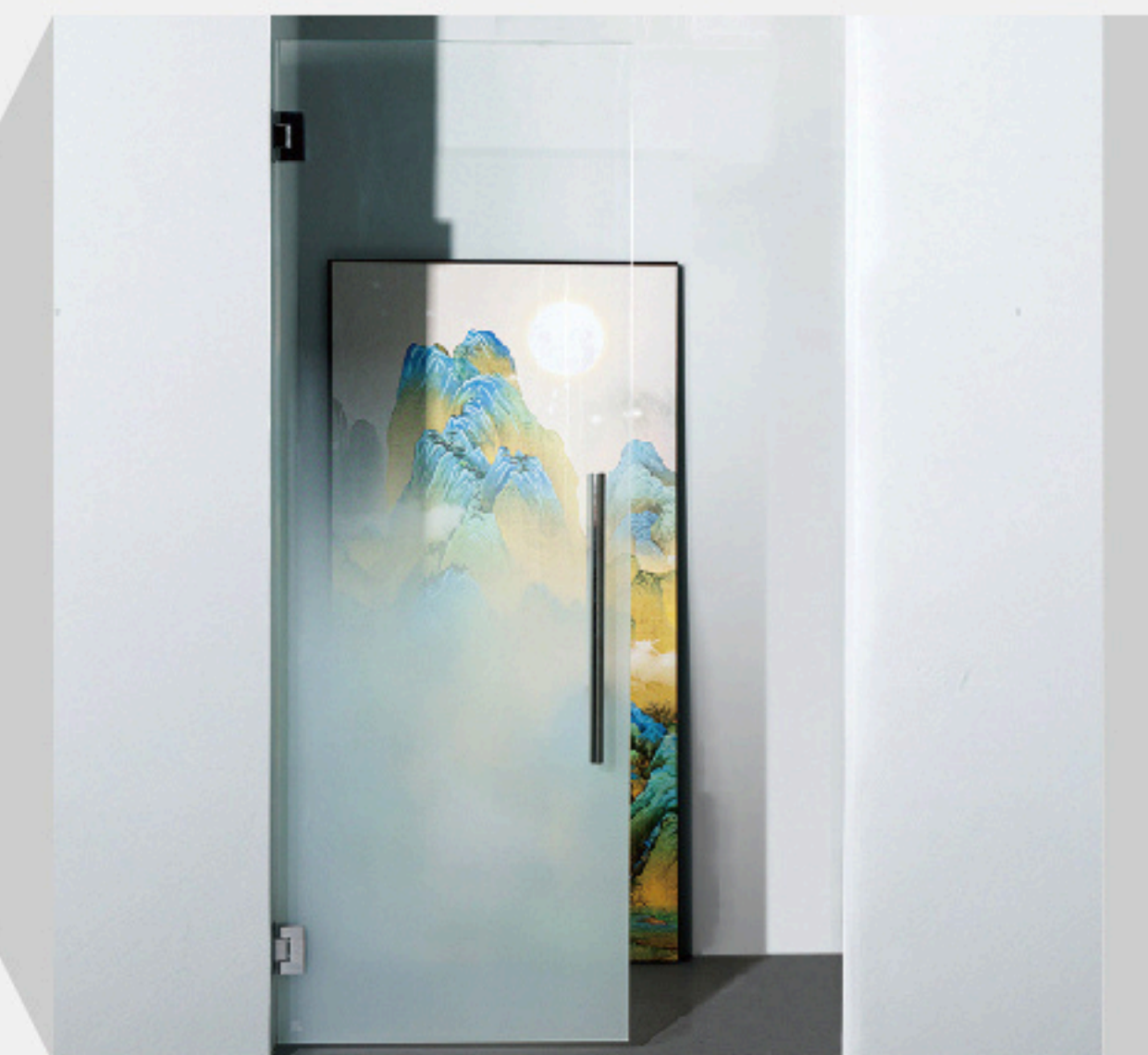
## Frameless Shower Door



3/8" ANSI Z97.1 certified tempered glass  
Black aluminum printed profile frame



3/8" ANSI Z97.1 certified tempered glass  
Silk screen printed before tempering



Frosted glass

Faded gradient glass



Quality Control of Tempered Glass

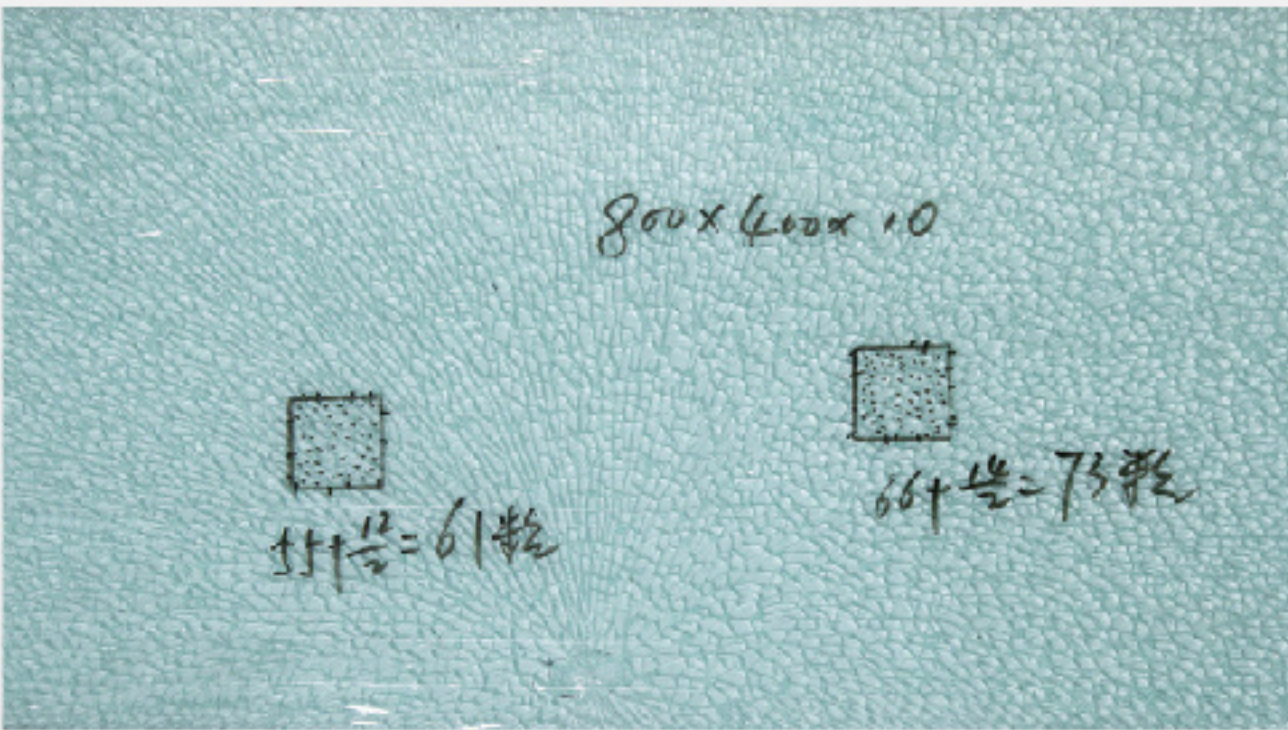
Overall Bow

ANSI Z97.1-2015 requires that the tempered bending within 1000mm should not exceed 3mm, and Apis can be controlled at 1.5mm.



Tempering Fragments

ANSI Z97.1-2015 requires that tempered glass fragments should not less than 40pcs per 50x50mm, and Apis can be controlled at 45-110pcs.



Final Inspection

The QC conducts final inspection according to the order and drawings to ensure the products are qualified.

Qingdao Apis Glass Industries Co., Ltd.

Glass Final Inspection Record Sheet

Date:

Order No.	Product Code	Length (mm)	Width (mm)	Thickness (mm)	Sheets /crate	Appearance Quality				Glass Size				Product Conclusion
						Corner Protectors / Cork Pads	Visible Defects	Plywood Crate	Label	Length	Width	Thickness	Diagonal	
Holes		Cutouts		Tempering			Curved Glass Tolerance			Printing	Others	Product Conclusion		
Diameter	Distance	Width	Length	Distance to edge	Curvature	Fragments	Logo position	Angel ce ≤2	Vault Height ±1	Straight length ≤5			Pattern Color	

Quality Control of Hardware

1

Test the Service Life of the Sliding System



2

Finish Quality Test by Using 3M Tape.



3

Salt Spray Test for Corrosion Resistance.



Material Analysis of Stainless Steel 304

测量结果

仪器	n/a	SpArcfire					
样品	标准、值   304#						
合金	304	类型标准化后的元素浓度					
		18.07 2025 17:19:37					
	Fe [%]	C [%]	Si [%]	Mn [%]	P [%]	S [%]	Cr [%]
1	71.3	0.0450	0.393	1.25	0.0317	<0.0017	18.1
2	71.2	0.0561	0.388	1.25	0.0302	<0.0023	18.2
3	71.1	0.0480	0.392	1.24	0.0324	<0.0019	18.2
Ø	71.2	0.0497	0.391	1.25	0.0314	<0.0020	18.2
	Mo [%]	Ni [%]	Al [%]	Co [%]	Cu [%]	Nb [%]	Ti [%]
1	0.0438	8.12	0.0084	0.224	0.199	<0.0025	0.0025
2	0.0431	8.17	0.0054	0.222	0.200	<0.0013	0.0019
3	0.0429	8.22	0.0098	0.223	0.198	0.0030	0.0024
Ø	0.0433	8.17	0.0079	0.223	0.199	0.0023	0.0023
	V [%]	W [%]	Pb [%]	Sn [%]	B [%]	Zr [%]	N [%]
1	0.120	<0.0023	<0.0030	0.0144	<0.0010	0.0157	<0.0500
2	0.120	<0.0024	<0.0030	0.0156	<0.0010	0.0152	<0.0500
3	0.124	<0.0029	<0.0030	0.0155	<0.0010	0.0156	<0.0500
Ø	0.121	<0.0028	<0.0030	0.0151	<0.0010	0.0155	<0.0500
	Se [%]	Sb [%]					
1	<0.0100	0.0402					
2	<0.0100	0.0411					
3	<0.0100	0.0323					
Ø	<0.0100	0.0379					



## Packaging

Glass and accessories all in one carton



## Packaging

Loading



Glass and accessories are packed separately



Unloading







Engineered Under U.S Standards

Dallas, TX | Nationwide Supply

[www.unionglassus.com](http://www.unionglassus.com)

[manager@unionglassus.com](mailto:manager@unionglassus.com)

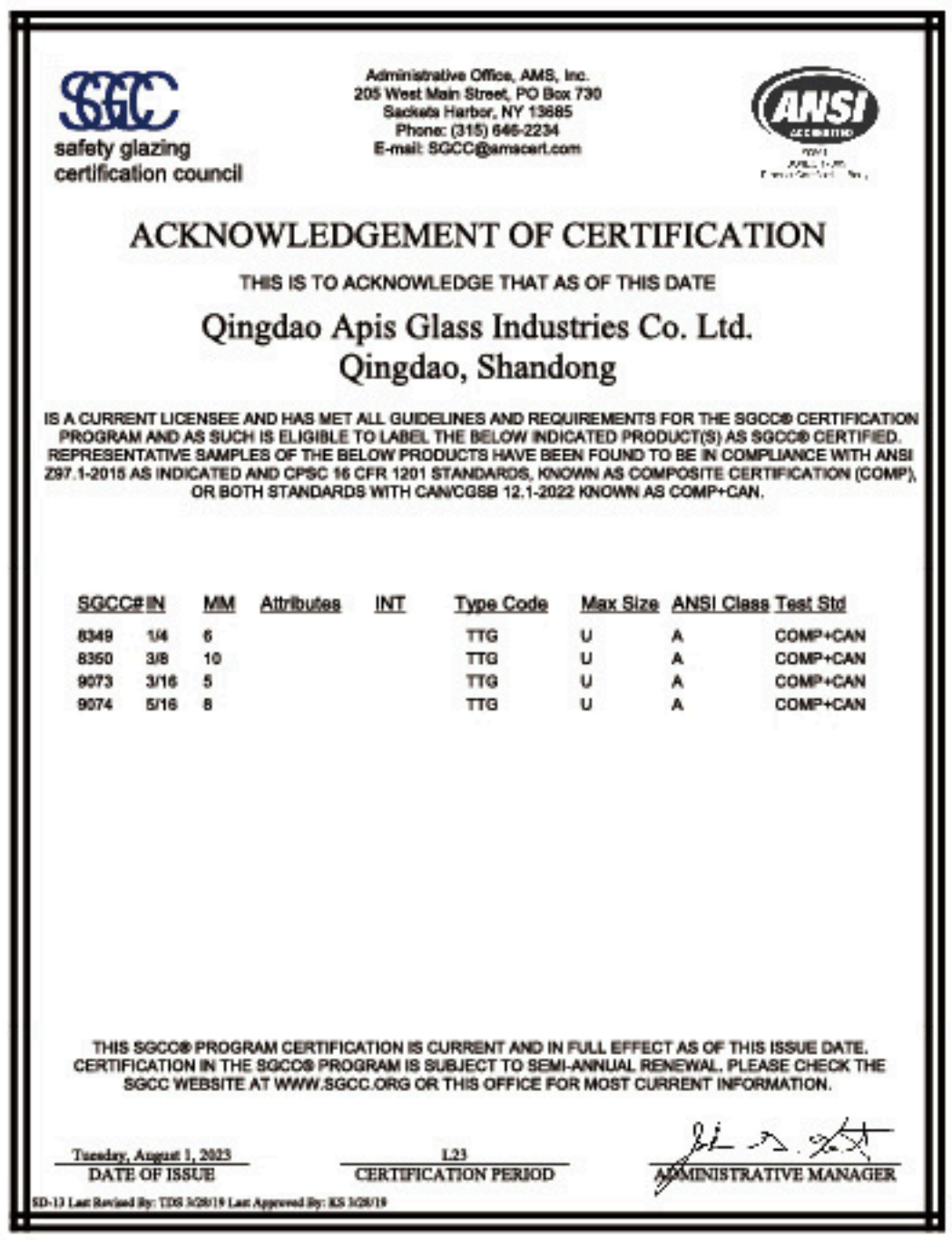
[sales@unionglassus.com](mailto:sales@unionglassus.com)

[California@unionglassus.com](mailto:California@unionglassus.com)

+214-952-7900



A 20 years professional team is ready to serve you at any time.



SGCC CERTIFICATE



ISO 9001 CERTIFICATE